

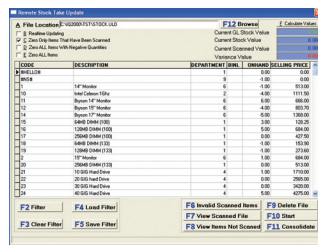
• Purchase and Sales Orders help streamline your inventory management for best possible stock turnover times. Backorders are handled and can be managed effectively. The Quotes module allows further control of the selling process by allowing Quote conversions to Sales Orders and then Invoices with the click of a few buttons. This process helps eliminate costly re-input errors and speeds up time to delivery for the customer.

• Extensive financial reporting with Cashbooks, Trial Balance, Income Statement, Balance Sheet and VAT reporting help streamline your month end procedures by having the right information available at the right time.

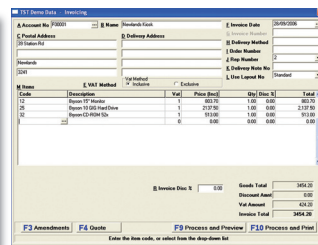
IQ 2000 has a compliment of cost effective Add-On modules that are fully integrated to the debtors, creditors, stock and general ledger.

**THESE ADD ON MODULES INCLUDE:**

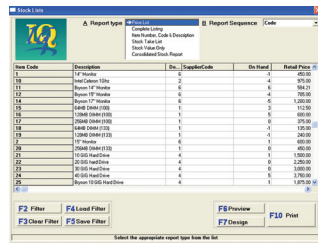
- Point of Sale incl petty cash
  - Job Cards
- Purchase and Sales Orders
  - Report Writer
- JCM Gold cash register interface to IQ
  - Bill of Quantities
- Head Office Distributed Processing
  - Laybyes
- Vehicle workshop management
  - Spreadsheet
- Courier / Waybill module
  - Quotes
  - Contract Pricing



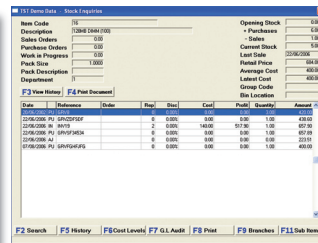
REMOTE STOCK TAKE



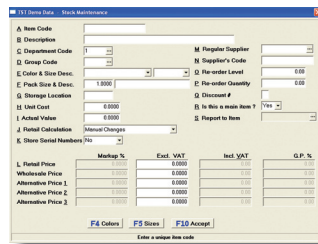
INVOICING



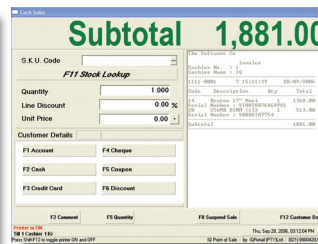
STOCK LIST



STOCK ENQUIRIES



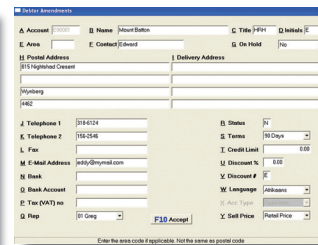
STOCK MAINTENANCE



CASH SALES



GENERAL LEDGER



DEBTOR AMENDMENTS

0861 IQINFO / 0861 474636

www.iqretail.co.za

Tel: +27 21 880 0420

Fax: +27 21 880 0488

Technopark, Stellenbosch



www.iqretail.co.za

IQ 2000 has over the course of many years of use, proven to be a robust and reliable integrated system. The affordability of this program can be attributed to its modular structure.

- It is in fact feature rich and scalable so it grows with your business. This means that you can choose from numerous add-on modules to help streamline your business as the success of your business grows.

- IQ 2000 will allow your company to keep control of your customers, suppliers, inventory and general ledger in a consistent way that makes working with the system intuitive and user friendly. The ease in which you enter information and view transactions has been specifically built to allow users who traditionally have used simpler means, like spreadsheets, for capturing company and transactional information. The ability to track the progress of your business allows you to focus on the areas of your business that contribute most substantially to increased growth.

- IQ 2000 has advanced stock features like creating and managing the printing of barcodes within the system. You can then use these barcodes for scanning from the Point Of Sale module. This then helps serve customers in the best possible time.

Return items like bottles and gas canisters are effectively managed as they reduce the sales figure and place the relevant number of returned items back into stock for management of your returns process.

## IQ 2000 FEATURES LIST

### FULLY FEATURED

- Single user or LAN (network) option, Windows 98/NT/2000 & Novell.
- All modules fully integrated
- Integrated Word Processor
- Caters for both mouse and keyboard input options
- Context sensitive on-line help
- Unlimited terminals/accounts/companies
- Audit control
- Password control
- Report writers
- Stationery/forms user specified
- Barcode scanning & printing
- Various cash drawer, pole display, scanner & printer configurations

### GENERAL LEDGER

- Unlimited chart of accounts
- 5 Alpha-numeric free format ledger account structure & 30 characters for description
- Caters for multiple branch, department and accounting grouping with in one ledger
- Fixed Asset register and depreciation posting
- 24 Period budget entry and reporting
- Cashbook with split entries and posting from bank to bank account with recurring monthly entries and reconciliation.
- No month-end procedure
- Creditor and debtor payments (direct deposits) and refunds direct from the cashbook
- Post up to 24 months (2 year) active ledger
- Entries posted to any month at any time
- Year end balances automatically calculated and brought forward
- Detailed and summarized VAT reporting for any period(s)
- Trial balance
- Balance sheet and income statement
- Default chart of accounts
- Cash Flow reports
- Detailed ledger audit for any period
- User design of budget, income statement, balance sheet report

### STOCK

- 15 digit alphanumeric stock code & 30 character item description
- Stock coding matrix setup
- Multi-tiered selling prices
- Manual or Mark-up % (latest, average, highest) retail price calculations methods
- Costing based on FIFO
- Serial number tracking
- Linked stock/debtors discount structures
- Cascading / report to item relational stock items
- Caters for Non-stock / Service items / Buy-outs
- Departmental & Group classification
- Re-order level and quantity maintenance
- Colour & size maintenance
- Stock adjustments on both unit cost and on hand quantities
- Reporting for Stock Take, slow movers, retail price listings, stock value analysis, etc.
- Reorder reporting based on reorder level and reorder quantity
- Detailed sales and purchase analysis per day, week, month or year, per customer, department or product code
- Management gross profit and stock loss analysis
- Departmental and group sales, purchase and GP% analysis
- Detailed stock audit tracking
- Representative reporting with commissions and target structuring
- Instant recall of invoices, credit & goods received notes and goods returned
- Inter branch transfers
- Global stock detail amendments and price changes

### INVOICING / CREDIT NOTES / GOODS RECEIVING GOODS RETURNED

- User definable layouts
- Unlimited amount of line items/detail
- 5 Other / additional charges with separate VAT and ledger integration
- Auto invoice and credit note numbering
- Invoice or receive from debtor / supplier holding and be invoicing / receiving from another stock holding, while integrated to a different ledger holding company
- Once off quotations
- Inclusive or exclusive VAT methods
- User definable stock quantity fractions after decimal (e.g. 5.6, 7.2, etc)
- Integrated to purchase orders, sales, orders, bill of quantities, point of sale, debtors, creditors, and general ledger
- Cash Sales / Purchases / Refunds & Returns
- Percentage discounting on both line and on total
- Negative and below reorder level notification
- Price changes and below cost, control
- Strict credit control (over limit, terms, on hold, etc)
- Serial number tracking
- Linked stock/debtors discount and pricing structures
- Caters for Line memos / narrative text input

### DEBTORS

- 6 Alpha-numeric account numbering, manual or auto numeric incrementing
- Open item and brought forward account types
- Auto posting of recurring monthly debits
- Terms and credit limitations
- Early settlement discount
- Ageing to 180 days
- "Hold sale" over limit & over terms account blocking facilities
- Customer language selection
- Linked Representative and retail pricing
- Perpetual 12 month summarized sales and profit history per customer
- Interest charging
- Detailed transaction audit analysis, (e.g. sales, payments, credit notes, audit trails, etc)
- Detailed account listings
- Age analysis reporting
- Label & mail merge printing
- Recurring charges
- Post dated cheques
- Unlimited history/archive storage
- Monthly statements and Interest charging
- Top Clients
- Manual month end ageing

### CREDITORS

- 6 Alpha-numeric account numbering, manual or auto numeric incrementing
- Open item and brought forward account types
- Terms and credit limitations
- Perpetual 12 month purchase history by supplier
- Detailed transaction audit analysis, (e.g. purchases, payments, credit notes, audit trails, etc)
- Detailed account listing and movement
- Age analysis reporting
- Unlimited history / archive storage
- Monthly advise notes
- Payment reconciliation
- Most active suppliers