

The intelligent choice.



IQ ARTIFICIAL MANAGEMENT COST

P R E F A C E

This is the IQ Artificial Management Cost reference guide for IQ Business & IQ Enterprise software systems.

The document will aid in the understanding and configuration of the IQ Artificial Management Cost in order for it to function correctly.

Although every effort has been made to keep this IQ Artificial Management Cost document up to date, some of the screen examples may not be 100% the same as the ones reflected in previous versions of IQ Artificial Management Cost. This is due to the continuous development and improvement of the IQ Artificial Management Cost.

Unfortunately, there will be a discrepancy from time to time. We do apologize for the inconvenience that it may cause.

Should you feel that the IQ Artificial Management Cost document is inadequate or requires further explanation or more and better examples, please feel free to email us.

We would love to have some feedback in order to improve the IQ Artificial Management Cost document in some way or another.

Regards,

IQ Retail (Pty) Ltd

CONTENTS

INTRODUCTION	4
SETUP	4
DEFAULT SETTING 2 – ARTIFICIALLY INFLATED COST PERCENTAGE	4
ENABLE ARTIFICIALTY INFLATED COST PERCENTAGE	5
EXAMPLES OF MANAGER COST DISPLAY OPTIONS	6
Stock Enquiries View - Display	6
Stock Enquiries View – Select Visible Fields	7
Stock Search Screen	8
Stock Price Maintenance	9
SECURITY	10
View Manger Cost Security Code (100122)	10

INTRODUCTION

IQ Artificial Cost Management module will assist with an artificially inflated cost that allows management to set cost + percentage. This option will display as a view option only. Once the percentage has been entered the Manager Cost will display as a Rand Value. This was created to allow IQ users to view only this cost instead of actual average cost.

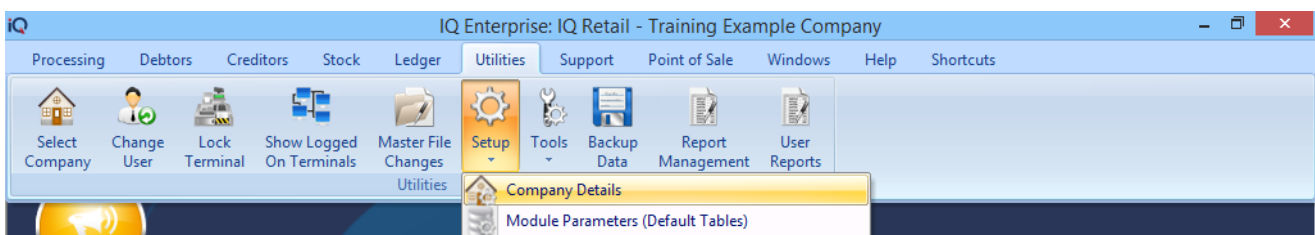
FOR EXAMPLE: If the Artificial Cost percentage is 25 % a stock item with an average cost (unit cost) of R10 the manager cost will be R12.50 or R95 average cost will display as R118.75.

NOTE: IQ Artificial Management Cost will be available in the following modules: Stock Maintenance, Stock Enquires, Stock Sell Price (% Markup on Cost) and Good Receiving.

SETUP

The first thing to do is to enable IQ Artificial Management Cost on the system.

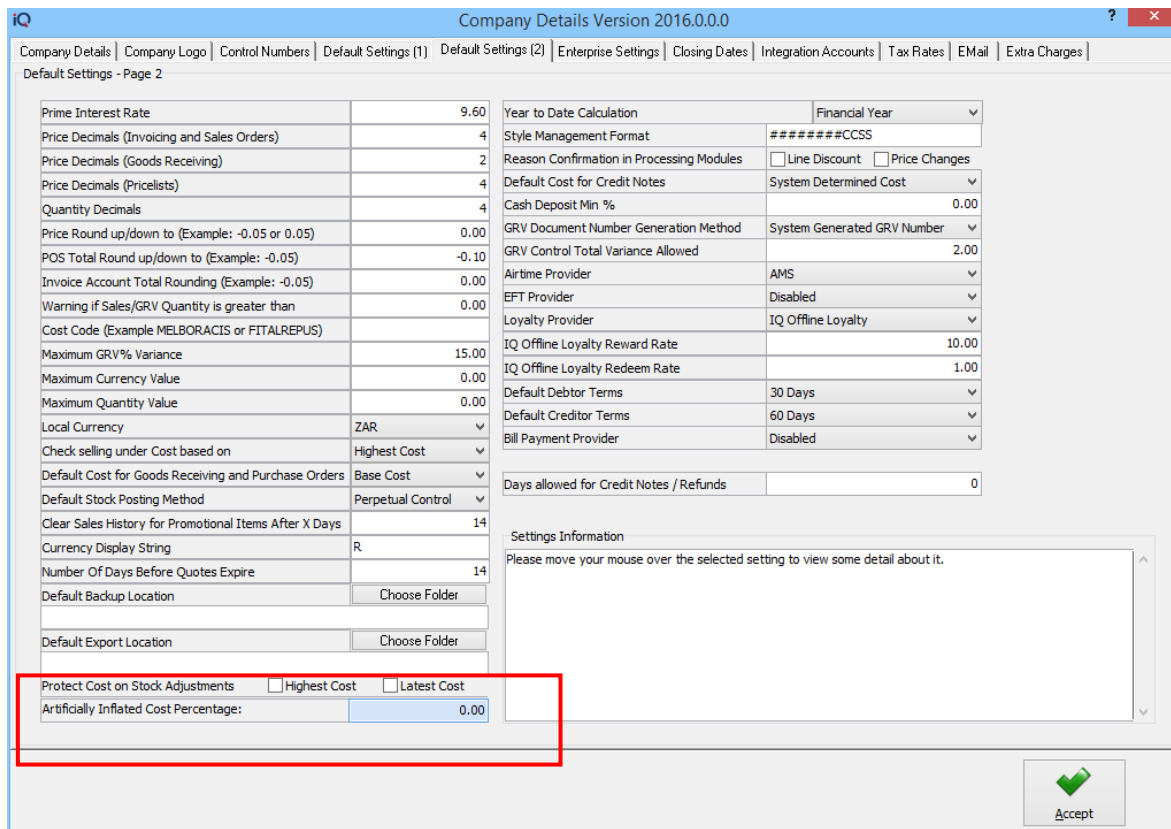
From the IQ Main menu → Utilities → Setup → Company Details → Default Setting 2.



DEFAULT SETTING 2 – ARTIFICIALLY INFLATED COST PERCENTAGE

The Artificially inflated Cost Percentage will be a percentage, the percentage will then be displayed in a Rand value in various average cost related screens.

NOTE: IQ Artificial Management Cost will be available in the following modules: Stock Maintenance, Stock Enquires, Stock Sell Price (% Markup on Cost) and Good Receiving.



ENABLE ARTIFICIALTY INFLATED COST PERCENTAGE

Once the artificial cost has been entered in Default Setting 2 the Manager Cost will display under Stock → Maintenance → Edit Stock Item → Stock Pricing Tab.

NOTE: If the Unit Cost of an Stock Item is zero (0) the Manger cost will display as zero (0).

Stock Amendments IQ Retail - Training Example Company Version 2016.0.0.0

Stock Details | Stock Pricing | User Defined Data | Multiple Barcodes | Item Suppliers | Additional Details | Associated Items | Transaction History | Ordering

Setup of Stock Selling Prices

Prices Type	Exclusive	Inclusive	Markup %	G.P. %	Markup % (Latest Cost)	G.P. % (Latest Cost)
Retail Price	175.4386	200.00	84.67	45.85	84.67	45.85
Wholesale Price	188.5965	215.00	98.52	49.63	98.52	49.63
Price 3	184.2105	210.00	93.91	48.43	93.91	48.43
Price 4	166.6667	190.00	75.44	43.00	75.44	43.00
Alternative Price 3	157.8947	180.00	66.20	39.83	66.20	39.83
Alternative Price 4	153.5088	175.00	61.59	38.11	61.59	38.11
Alternative Price 5	149.1228	170.00	56.97	36.29	56.97	36.29
Alternative Price 6	144.7368	165.00	52.35	34.36	52.35	34.36
Alternative Price 7	140.3509	160.00	47.74	32.31	47.74	32.31
Alternative Price 8	131.5789	150.00	38.50	27.80	38.50	27.80

Recommended Retail Based On :

*** Recommended G.P % Not Assigned**

Cost Level 1	96.00	Average Cost	95.00
Cost Level 2	0.00	Latest Cost	95.00
Cost Level 3	96.00	Base Cost	95.00
Cost Level 4	95.00	Future Cost	0.00
Cost Level 5	95.00	Previous Cost	58.22
		Manager Cost	118.75

Pricing

Recommended GP%	0.00
Price Variant Group	▼
Unit Cost	95.0000
Future Cost	0.00

Show Hints Accept

EXAMPLES OF MANAGER COST DISPLAY OPTIONS

The Manger Cost will display in Stock Enquires, Stock Search Screens, Select Visible Fields, Stock Price Maintenance (% Markup on Cost) and Stock Maintenance.

STOCK ENQUIRIES VIEW - DISPLAY

From the IQ Main menu → Stock → Enquiries → Select the Stock item → Display.

Stock Enquiries Version 2016.0.0.0

Info | Stock Pricing | Image | Long Description | Stock Suppliers | Associated Items | User Defined Data

Item Code	BM001	Opening Stock	105.0000	Group Code	0008	Order Method	Normal
Description	Cement PVC 50kg	+ Purchases	0.0000	Bin Location		Order Quantity	20
Alternative Description		-Returns	0.0000	Highest Cost	96	Order Level	100
Sales Orders	15	-Sales	59.0000	Latest Cost	95.00	Maximum Level	0
Purchase Orders	146	+Credits	0.0000	Average Cost	95.00	DateLS	06/05/2016
Work in Progress	0	+Transfers In	0.0000	Last Sale	06/05/2016	DateLM	06/05/2016
Pack Size	0	-Transfers Out	0.0000	Retail Price	200.0000	DateLP	19/08/2015
Pack Description	EA	Adjustments	0.0000	Manager Cost	118.75	DateLT	11/02/2015
Department	002	WriteOffs	0.0000			Prev Sell Price	175.43859649
		+ Sundry Receipts	0.0000			Last Stock Date	18/07/2012
		- Sundry Issues	0.0000				
		Other	0.0000				
		Closing Stock	46.0000				

Current Period: May 2016

Details

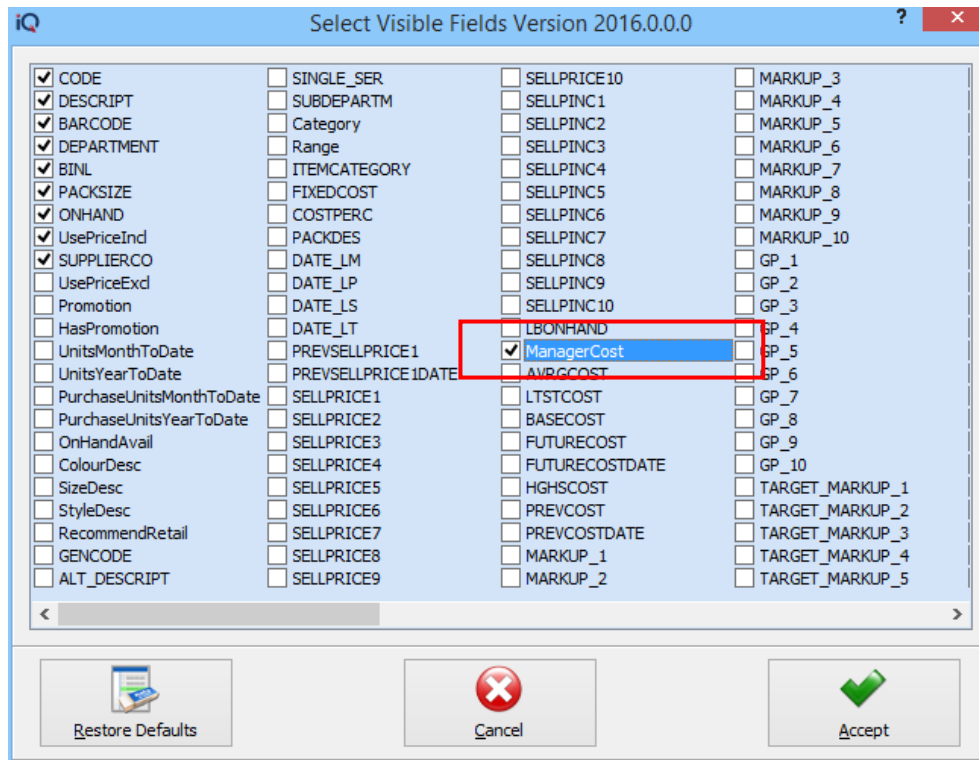
Number	Code	Date	Reference	DC	TCode	ACode	Amount	GLAudit	Unique
1747	BM001	05/05/2016	INV395	C	IN		1 754.3860	819	1
1750	BM001	05/05/2016	INV397	C	IN		1 754.3860	821	1
1752	BM001	06/05/2016	INV398	C	IN		1 754.3860	822	1
1756	BM001	06/05/2016	P.O.S 1-143	C	IN		175.4386	824	1
1757	BM001	06/05/2016	P.O.S 1-143	C	IN		175.4386	824	2
1759	BM001	06/05/2016	P.O.S 1-144	C	IN		1 754.3860	825	2
1760	BM001	06/05/2016	P.O.S 1-146	C	IN		175.4386	826	1
1761	BM001	06/05/2016	P.O.S 1-146	C	IN		175.4386	826	2
1762	BM001	06/05/2016	INV399	C	IN		2 631.5789	827	1

Buttons: Select Visible Fields, Search, Sales History, Cost Levels, G.L. Audit, Document Options, Report Options, Locations, Online Enquiry

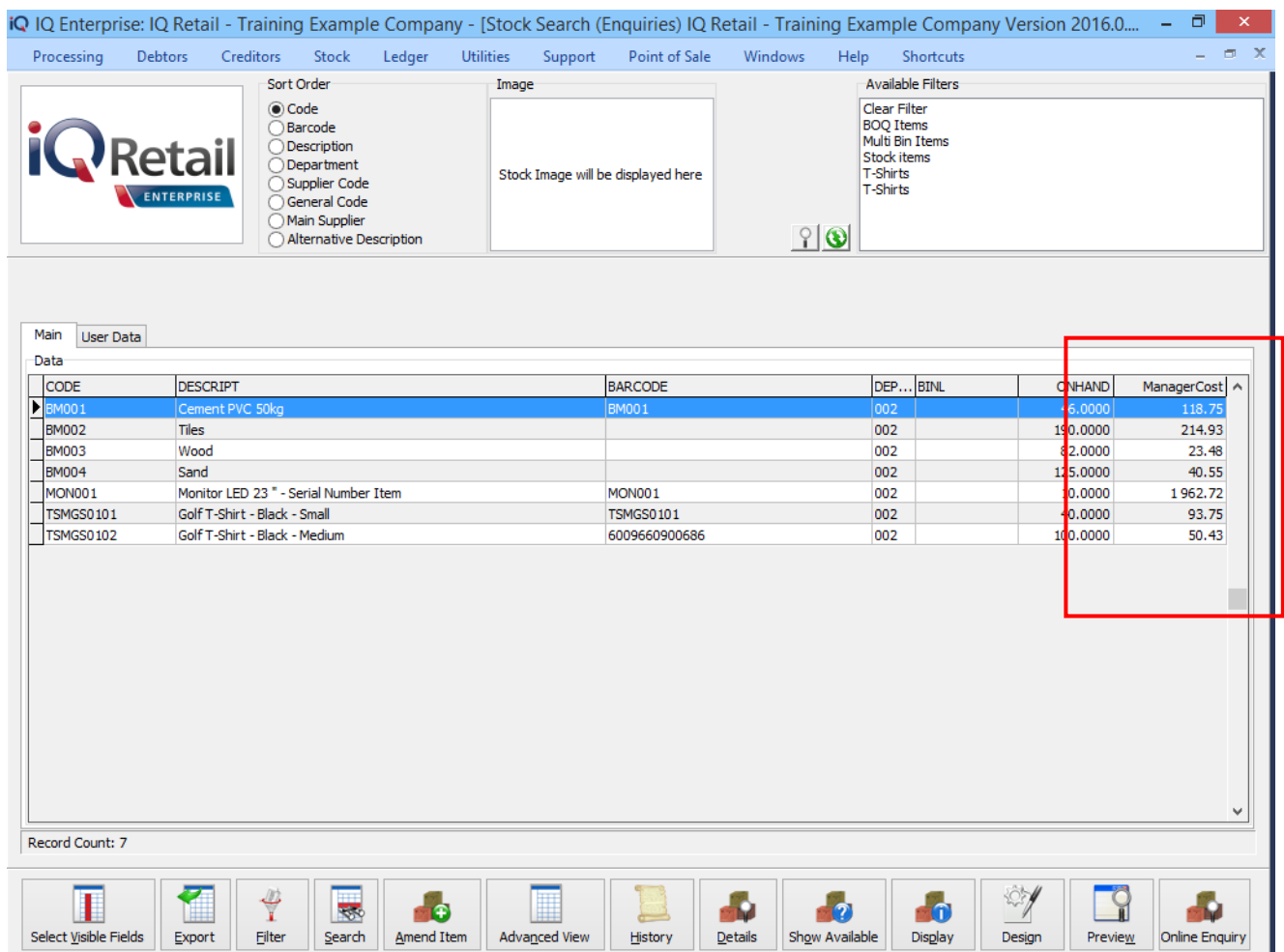
NOTE: The manger Cost is only a display / view option.

STOCK ENQUIRIES VIEW – SELECT VISIBLE FIELDS

From the IQ Main menu → Stock → Enquiries → Select the Stock item → ManagerCost.



Once the Management Cost has been selected select Accept.



STOCK SEARCH SCREEN

From the IQ Main menu → Processing → Goods Receiving → Select the Creditor → Select the Stock item.

NOTE: For all the Management cost fields to display an amount, a transaction must be processed for the stock item or to see the Cost Management field the user can open the stock item in Stock → Maintenance → Edit → Accept the stock item. This will update the new field information.

Search Selection - [F7] To Switch

Search By - double click to change

- Filter Records
- Go To Record

DEFAULT
 GENCODE
 DESCRIPTION
 DEPARTMENT
 SUPPLIERCODE
 BARCODE
 BINL
 Regular_SU
 ITEMCATEGORY
 Regular_SU Description

CODE	DESCRIPT	BARCODE	ManagerCost	DE
00100010	Coke Bottle 1L	00100010	12.5	00
ABC001	ABC Classification - Class A	ABC001		00
ABC002	ABC Classification - Class B			00
ABC003	ABC Classification - Class C		0	00
BHW001	How To Build a House	BHW001		00
BM001	Cement PVC 50kg	BM001	118.75	00
BM002	Tiles		214.9294	00
BM003	Wood		23.48	00
BM004	Sand		40.55	00
BOQ001	Bill of Quantity - SI - 1	BOQ001		00
BOQ002	Bill of Quantity - Comp A	BOQ002		00
BOQ003	Bill of Quantity - Comp B	BOQ003		00
BOQ004	Bill of Quantity - Comp C	BOQ4		00

Cancel Select Visible Fields Search Accept

STOCK PRICE MAINTENANCE

From the IQ Main menu → Stock → Price Maintenance → % Markup on Cost → All or Single item.

iq
Stock Price Change
- □ ×

Current Stock Item

Single Item Selected

Stock Code	BM001
Stock Description	Cement PVC 50kg
Packsizes	0.00
Average Cost	95.000
Latest Cost	95.00
Future Cost	0.00
Manager Cost	118.750

Apply When:

Right Now
 Future Date

Use this cost:

Average Cost
 Latest Cost
 Future Cost (User defined)
 Highest of Latest Or Average Cost

Auto Calculation:

Never Auto Calc
 Auto Calc on Average Cost
 Auto Calc on Latest Cost
 Auto Calc After GRV on Selected Cost
 Auto Calc on user defined Future Cost
 Auto Calc on Highest Cost

Price Change

Price Type	Exclusive	Inclusive	Enable
Retail Price	175.43860	200.00000	<input type="checkbox"/>
Wholesale Price	188.59649	215.00000	<input type="checkbox"/>
Price 3	184.21053	210.00000	<input type="checkbox"/>
Price 4	166.66667	190.00000	<input type="checkbox"/>
Alternative Price 3	157.89474	180.00000	<input type="checkbox"/>
Alternative Price 4	153.50877	175.00000	<input type="checkbox"/>
Alternative Price 5	149.12281	170.00000	<input type="checkbox"/>
Alternative Price 6	144.73684	165.00000	<input type="checkbox"/>
Alternative Price 7	140.35088	160.00000	<input type="checkbox"/>

Price Type	Actual	Target	Enable
Retail Price	84.6722	84.67221	<input type="checkbox"/>
Wholesale Price	98.5226	98.52262	<input type="checkbox"/>
Price 3	93.9058	93.90582	<input type="checkbox"/>
Price 4	75.4386	75.43860	<input type="checkbox"/>
Alternative Price 3	66.2050	66.20499	<input type="checkbox"/>
Alternative Price 4	61.5882	61.58818	<input type="checkbox"/>
Alternative Price 5	56.9714	56.97138	<input type="checkbox"/>
Alternative Price 6	52.2546	52.25457	<input type="checkbox"/>

% Markup on Price	Enable
Markup on Retail Price	0.00000 <input type="checkbox"/>
Markup on Wholesale Price	0.00000 <input type="checkbox"/>
Markup on Price 3	0.00001 <input type="checkbox"/>
Markup on Price 4	-0.00002 <input type="checkbox"/>
Markup on Alternative Price 3	0.00002 <input type="checkbox"/>
Markup on Alternative Price 4	-0.00002 <input type="checkbox"/>
Markup on Alternative Price 5	0.00000 <input type="checkbox"/>
Markup on Alternative Price 6	0.00003 <input type="checkbox"/>
Markup on Alternative Price 7	-0.00002 <input type="checkbox"/>

Price Type	Actual	Target	Enable
Retail Price	G.P. % 45.8500	G.P. % 45.85000	<input type="checkbox"/>
Wholesale Price	49.6279	49.62791	<input type="checkbox"/>
Price 3	48.4286	48.42857	<input type="checkbox"/>
Price 4	43.0000	43.00000	<input type="checkbox"/>
Alternative Price 3	39.8333	39.83333	<input type="checkbox"/>
Alternative Price 4	38.1143	38.11429	<input type="checkbox"/>
Alternative Price 5	36.2941	36.29412	<input type="checkbox"/>
Alternative Price 6	34.3636	34.36364	<input type="checkbox"/>

0 %

Cancel

Reload Current Prices

Apply to Current Item

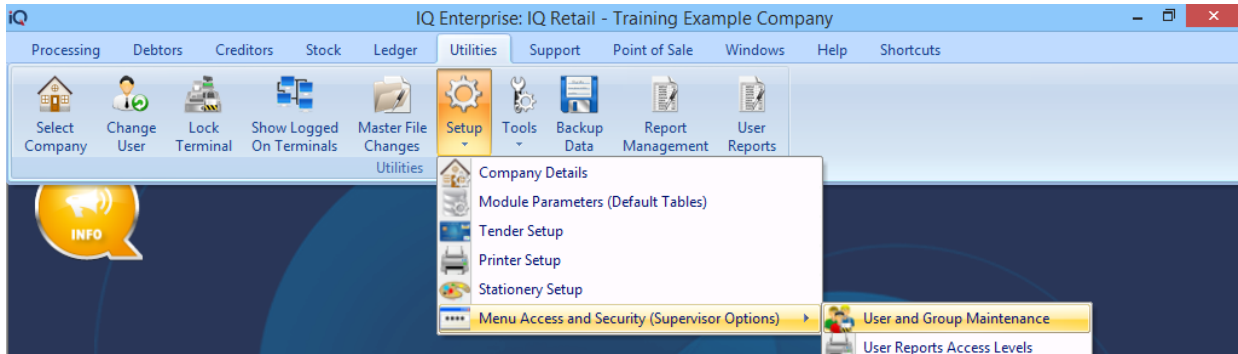
NOTE: The manger Cost is only a display / view option.

IQ Retail (Pty) Ltd © 2016

Page 9 of 10

SECURITY

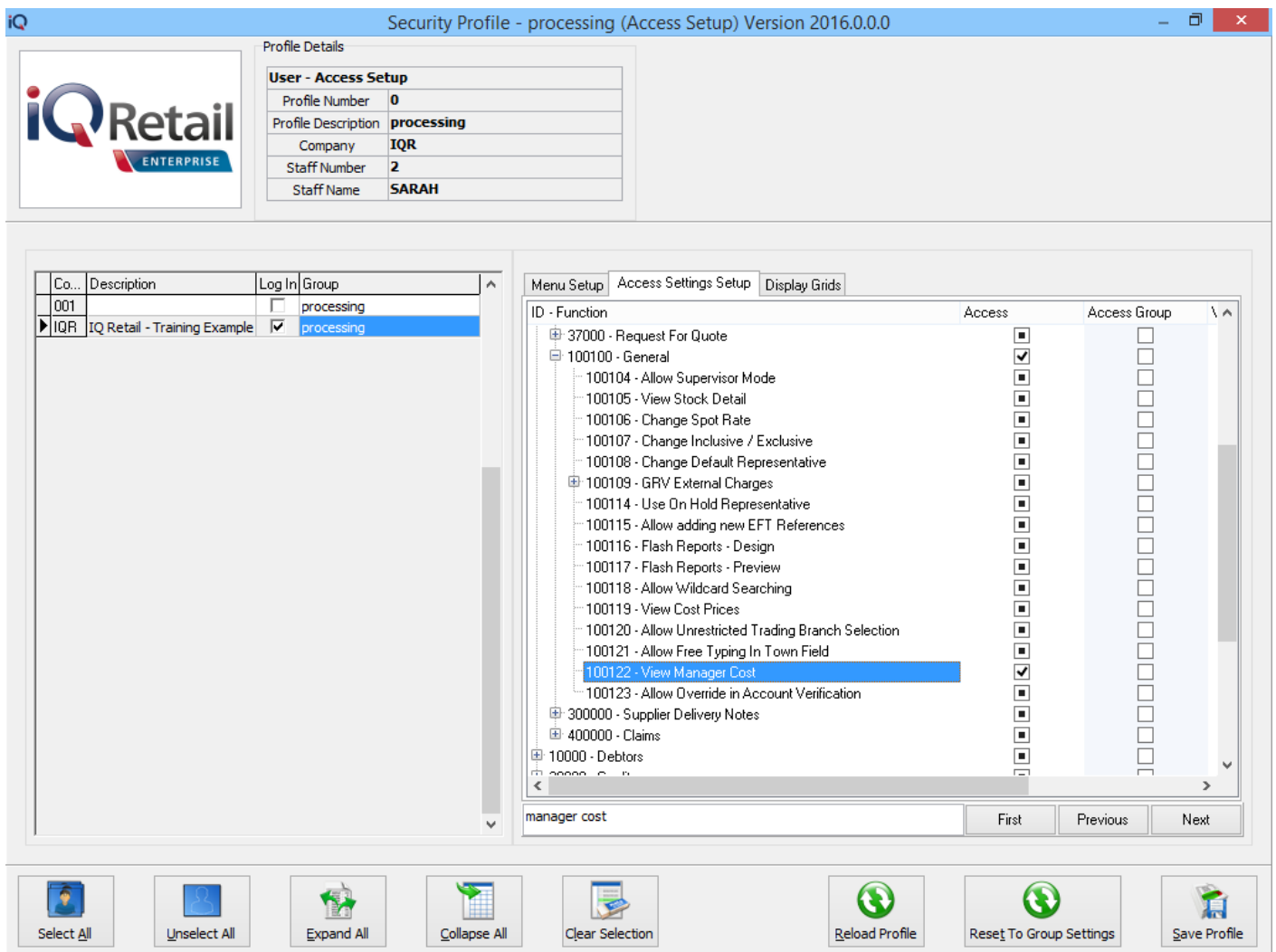
From the IQ Main menu → Utilities → Setup → Menu Access and Security → User and Group Maintenance → Group → Select Group → Group Menu & Security Settings → Access Setup.



Once the Access Setup has been select the search option will display at the bottom of the screen type the relevant security number rand select first, select the check box if applicable for the Group, repeat this function for all security codes.

VIEW MANGER COST SECURITY CODE (100122)

The View Manager Cost option will allow an user to view the Management Cost percentage in Stock → Enquiries → Display a Stock Item → Stock Pricing Tab.



--- END OF DOCUMENT ---