

The background is a dark blue color with a subtle grid pattern. On the left side, there are several overlapping geometric shapes: a large circle at the top, a smaller circle below it, and a vertical rectangle below that. On the right side, there is a large, thick, curved shape that resembles a stylized letter 'C' or a partial circle. The text 'The intelligent choice.' is centered in the lower right area, overlaid on the large curved shape.

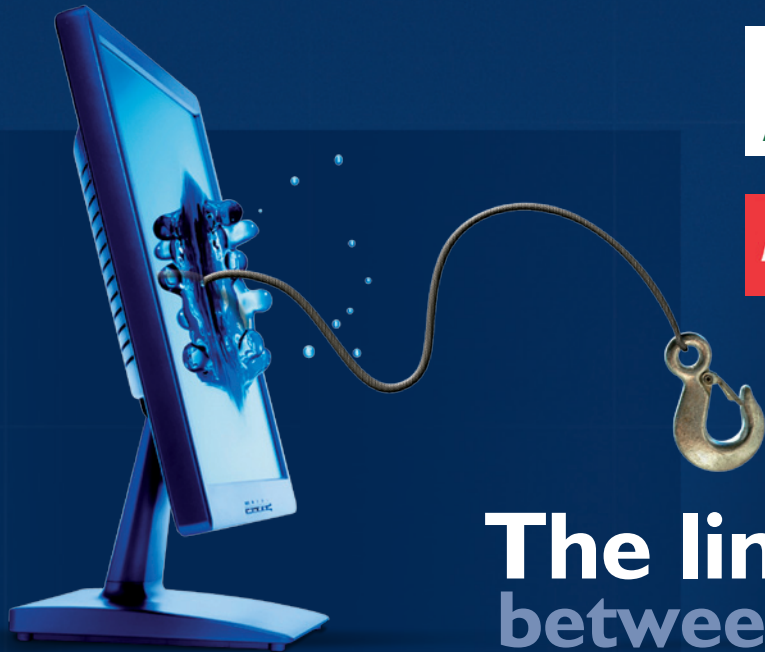
**The intelligent choice.**



The intelligent choice.  
[www.iqretail.co.za](http://www.iqretail.co.za)

IQ Retail has been at the forefront of business systems development for more than 20 years.

## Integrated Business Solutions



**The link**  
between business  
and accounting.

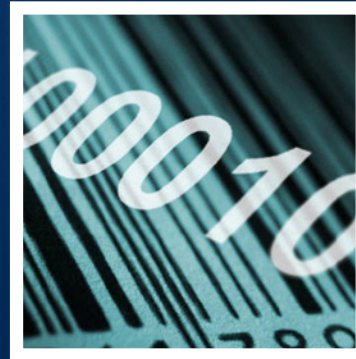


**The intelligent choice.**  
[www.iqretail.co.za](http://www.iqretail.co.za)

*IQ Retail has been at the forefront of business systems development for more than 20 years.*



**Accounting System**



**Stock Control System**



**Point of Sale System**

**The intelligent choice.**

## IQ Value Proposition

### Functionality

- Fully functional for sales and distribution
- Configurable for Multi-Branch
- Ease of use

### Information

- Imbedded Report Writer
- Full access to all database information
- User fields

### Real Time

- Transactions
- Information
- Low bandwidth footprint

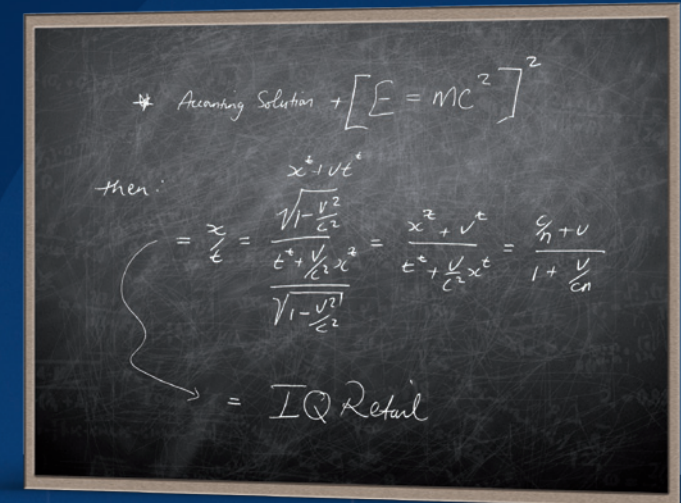
### Integrated

- Business system
- Accounting system

### Cost of Ownership

- Lower than ERP with same configuration
- Lower support costs

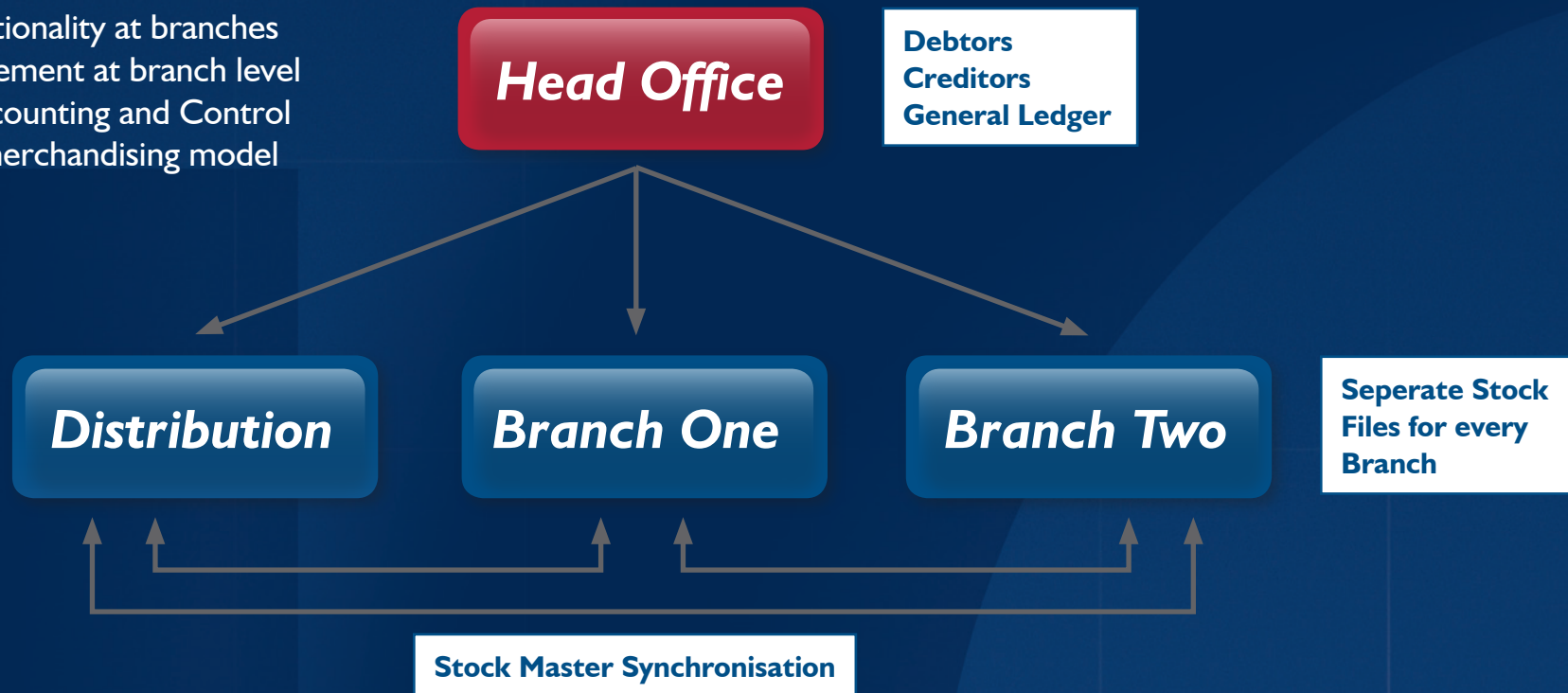
Tutor classes available:  
Call: 0861 IQInfo/  
0861 474636



## Multi-branch - Typical Configuration

### Principles:

- Minimise functionality at branches
- Enable management at branch level
- Centralise Accounting and Control
- Push or Pull merchandising model





**The intelligent choice.**  
[www.iqretail.co.za](http://www.iqretail.co.za)

*IQ Retail has been at the forefront of business systems development for more than 20 years.*

## Typical Workflow



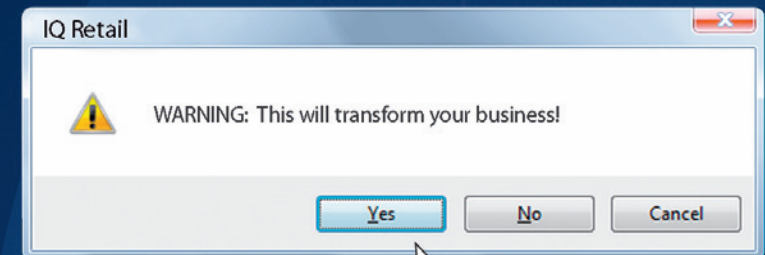
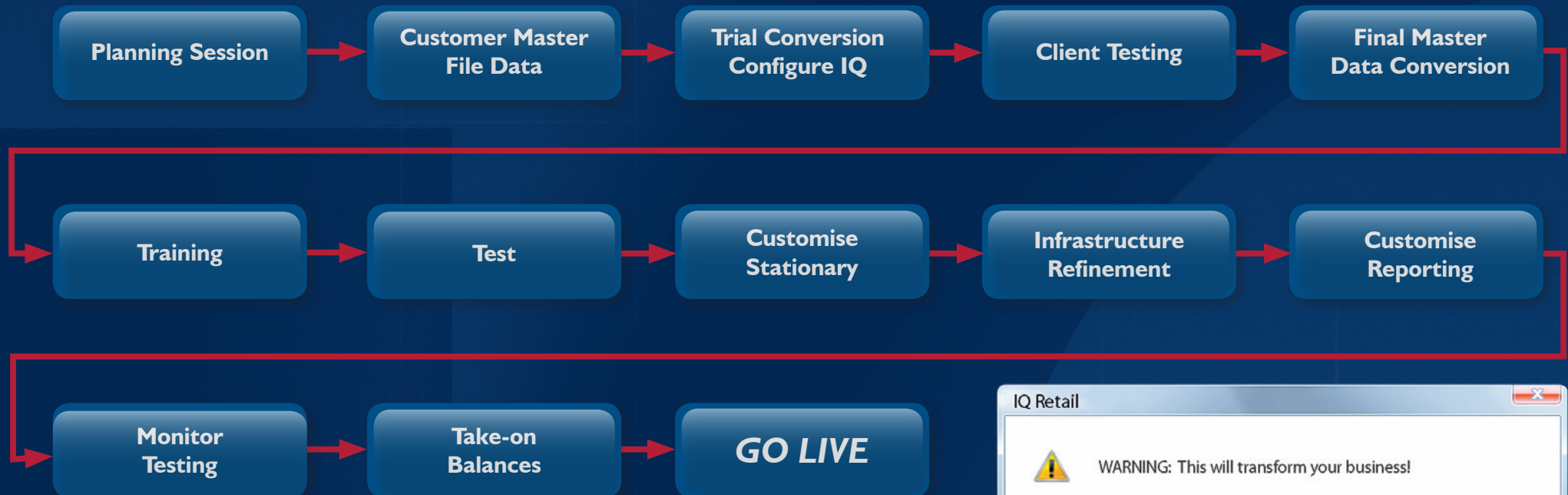
**Launch...**  
*your business into new frontiers*





*IQ Retail has been at the forefront of business systems development for more than 20 years.*

## Project Implementation Workflow



**The intelligent choice.**  
[www.iqretail.co.za](http://www.iqretail.co.za)

*IQ Retail has been at the forefront of business systems development for more than 20 years.*

**Benbel Hardware Group**  
*Donovan Alder, Financial Manager*



**IQ offers unbeatable value for money as an accounting solution to most business types, regardless of whether you are one site or many, a large operation or small business.**

**Cash Converters (60 Stores)**  
*Richard Mukheibir, Managing Director*



**There is no software like it in the market.”**

**Essential Hardware Group**  
*Gordon Price, General Manager*



**”IQ Retail is an impressive service provider, who understands the unique needs of the entrepreneurs who make up our organisation.**

**Pep Stores (1200 Stores)**  
*Frank Bravenboer, Sales Financial Manager*



**“The system solution was based on its stability, back up service and the constant upgrading process undertaken by the company.**

**Klein Karoo Group (300 terminals, 50 subsidiary companies)**  
*Pieter Swanepoel, IT Manager*



**“We chose IQ Enterprise for a number of reasons, principally because of its ability to process and integrate the many different product lines a large organisation such as ours handles.**

**PostNet Southern Africa (223 Stores)**  
*Wendy Sweetman, Head of Marketing, Communication & Training*



**The system is 100% accurate and is a valuable tool to manage your business. The proof of the pudding is that we have 223 stores in our network that use the system and all are happy and productive. This speaks for itself!”**